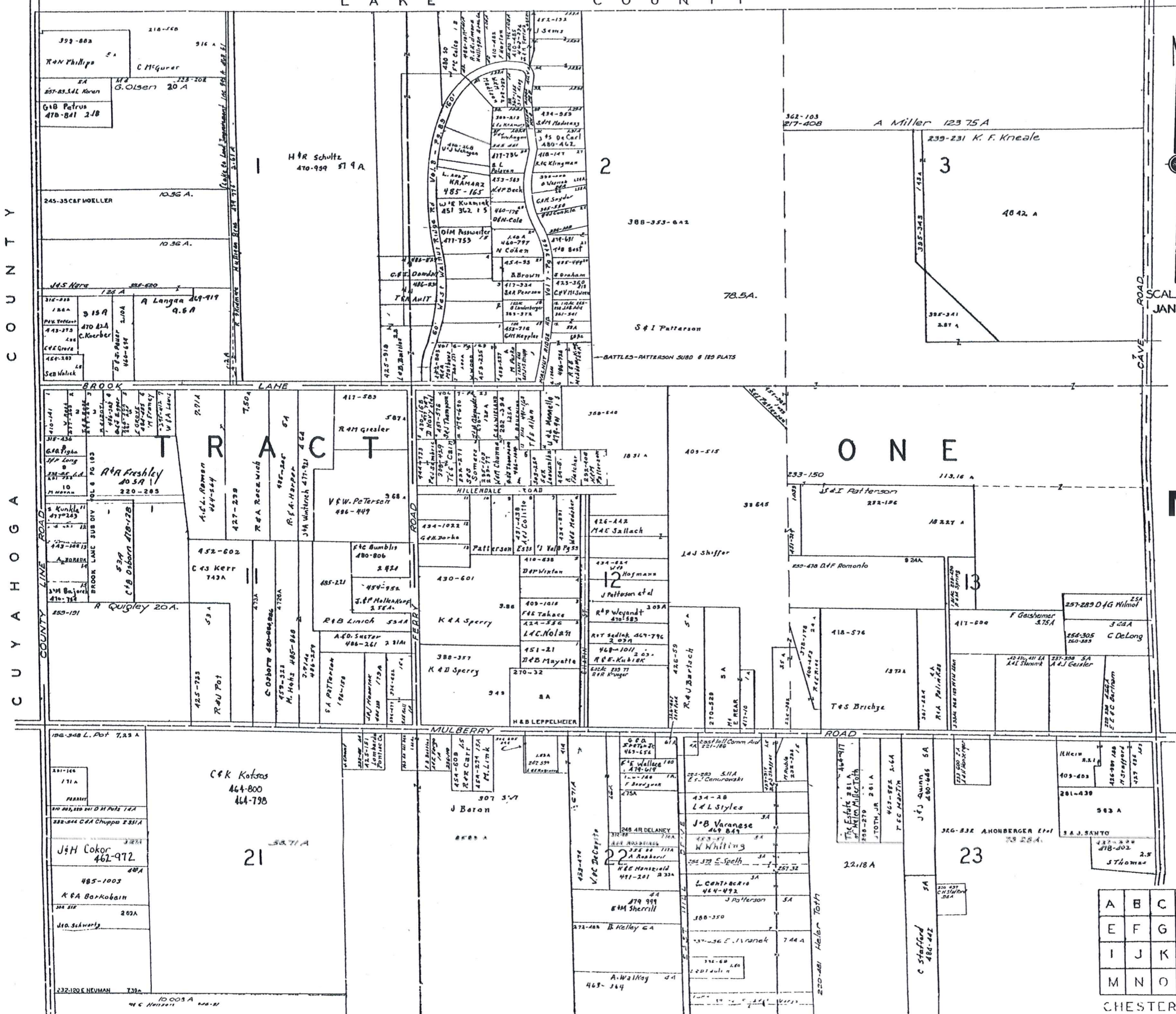


C O U N T Y C H E S T E R



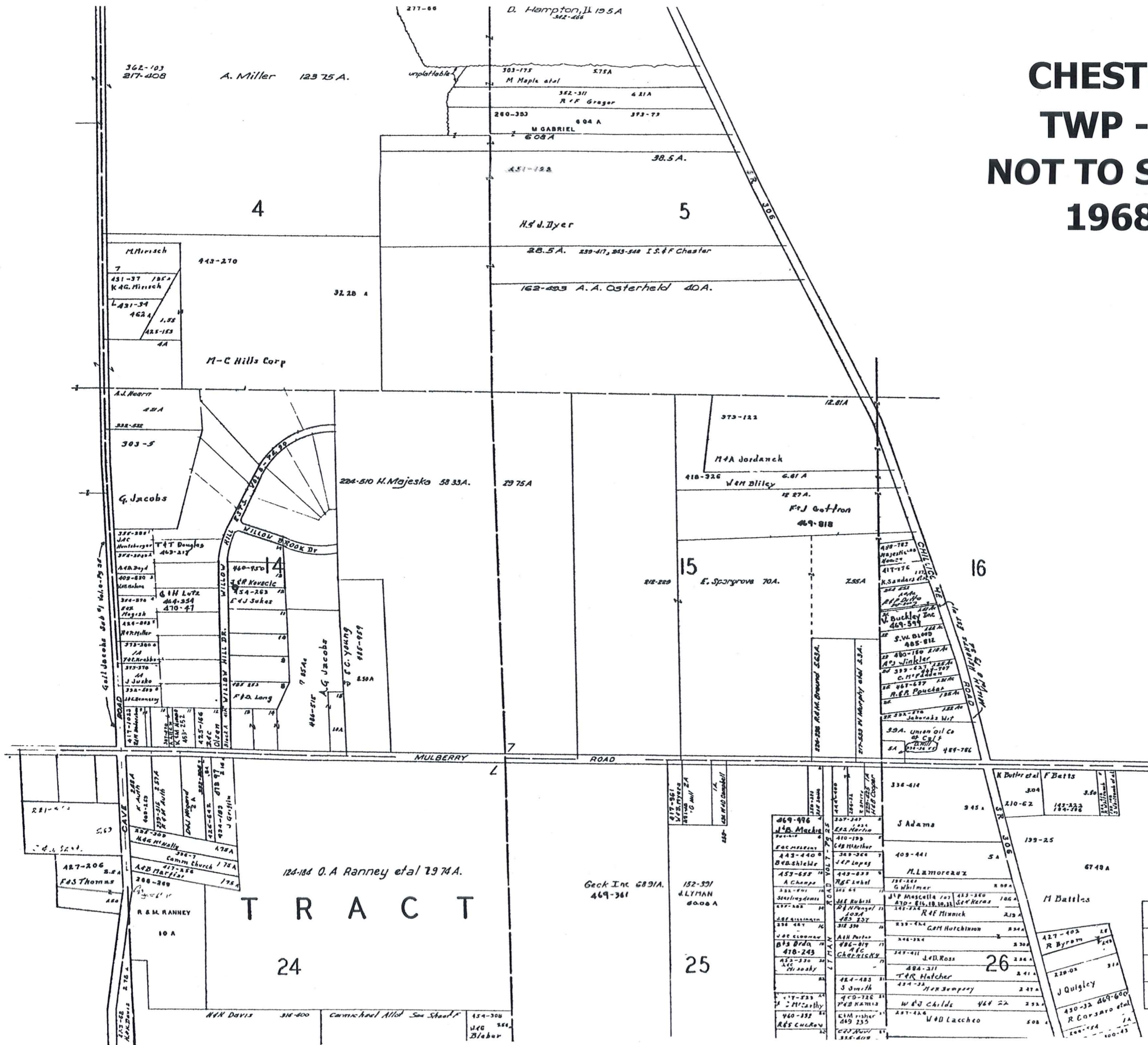
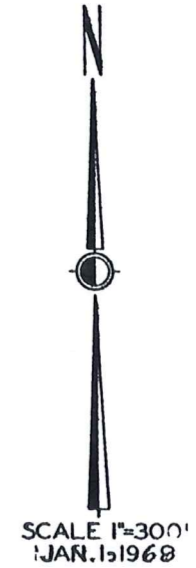
SCALE 1"=30'  
JAN. 1, 1968

# CHESTER TWP - A NOT TO SCALE 1968

A	B	C	D
E	F	G	H
I	J	K	L
M	N	O	

CHESTER A

# CHESTER TWP - B NOT TO SCALE 1968



A	C	D
E	F	G
I	J	K
M	N	O

CHESTER

L A K E C O U N T Y

- E. SHARP SURVEY  
VOL. 6 PG. 103 PLATS**
- 1 S.M. Ugrino 283-207
  - 2 D.A.S. Cicchallo 283-208
  - 3 R.T. Saito 403-313
  - 4 R.H. Johnson 417-674
  - 5 Bill P. Yelder 412-734
  - 6 F. Small 396-220
  - 7 A.J. DiStasio 420-056
  - 8 H. HLEBAN 281-04
  - 9 R.E. Phillips 431-780
  - 10 D.E. Kaufman 362-419
  - 11 W. W. Weller 424-244
  - 12 W. W. Weller 424-244
  - 13 J.S. Minner 451-737
  - 14
  - 15 B.G. ROBY 370-308
  - 16 J.E. Palm 326-285
  - 17 W.A. FREEMAN 281-478
  - 18 G. BREZINA 200-219
  - 19 R.R. BYULE 439-445
  - 20
  - 21 P.C. Barris 367-84
  - 22 G.W. Shuman 484-97
  - 23 R. WARREN 480-840
  - 24 J.A. BOZIC 484-981
  - 25 J.A. BOZIC 478-176
  - 26 J.D. BOZIC 484-982
  - 27 H.E. Hutzendahn 460-790
  - 28 C.D. Mooter 336-727
  - 29 A.F. Buzik 347-507
  - 30 C.D. Huchner 368-374
  - 31
  - 32 B.F.M. Roosa 468-819
  - 33 J.P. Schaefer 386-502
  - 34 R.H. Parsons 326-250

- 37 R. STAMBLESKY 342-214
- 38 R. Shaughnessy 408-180 R. Shaughnessy
- 39 W.
- 40 J.R.M. Cosko 451-499
- 41 H.M. Endrulas 454-508
- 42 H.M. Endrulas 454-510
- 43 Oana Verra Blos in 352-302
- 44 W. WHITESAVAGE 286-409
- 45
- 46 F.M. Klarrick 361-250
- 47 K. & Corvick 470-176
- 48 Row Acassi 311-107
- 49 V.M. Knight 423-501
- 50 G.J. KUSTER 281-482
- 51 W.A. Ward 421-515
- 52 C.D. Heckman 336-87
- 53 S. PICOZZI 232-40, 164-571
- 54 R.E. Slaty 486-297
- 55
- 56 G.P.K. Hunt 335-412
- 57
- 58 M. Repar 480-681
- 59
- 60
- 61
- 62
- 63
- 64
- 65 W. Jenkins 446-221 470-42
- 66 E.L. Hallabaugh 418-1064
- 67

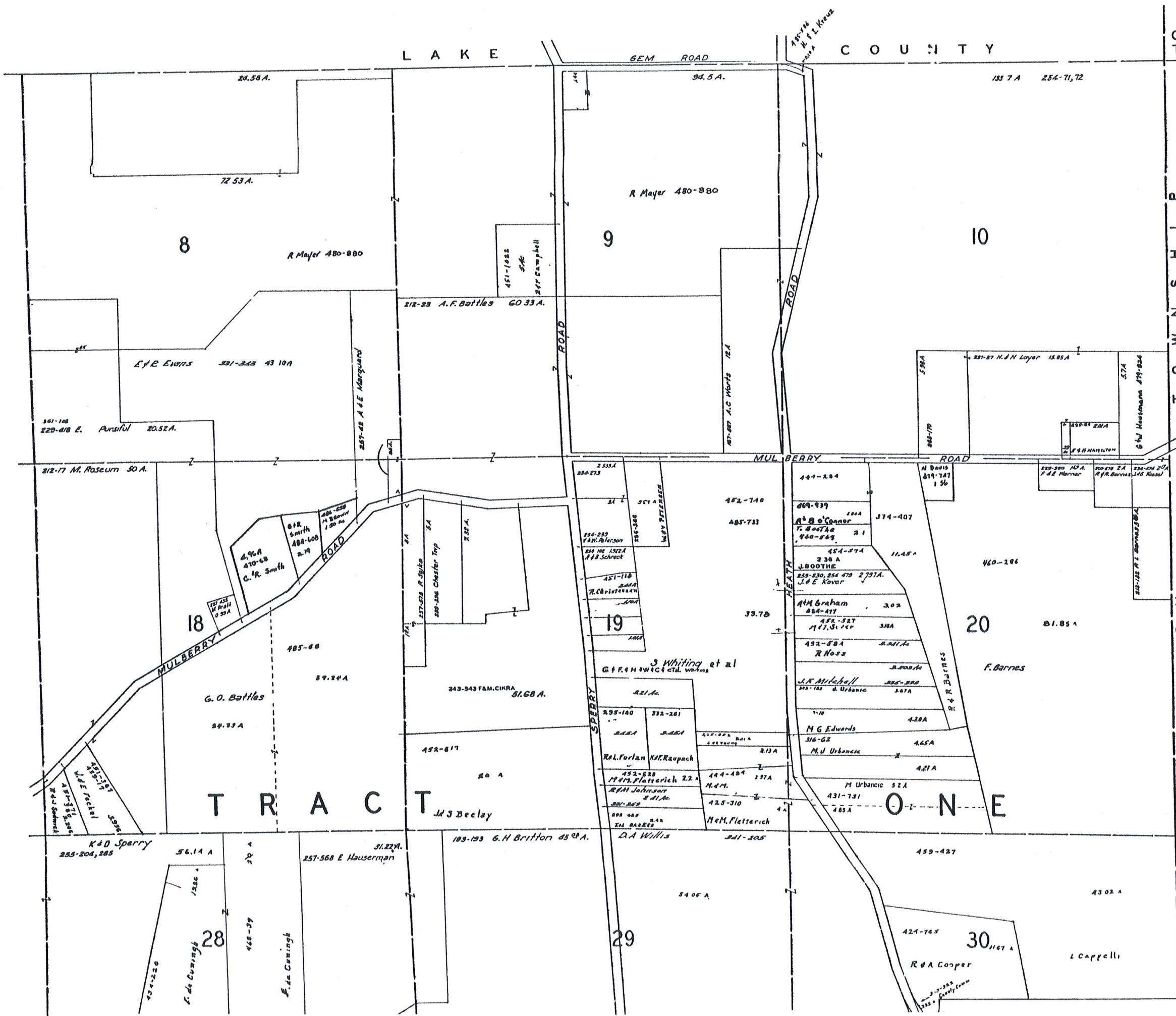


SCALE 1"=300'  
JAN. 15 1968

**CHESTER  
TWP - C  
NOT TO SCALE  
1968**

A	B	D
E	F	G
I	J	K
M	N	O

CHESTER C

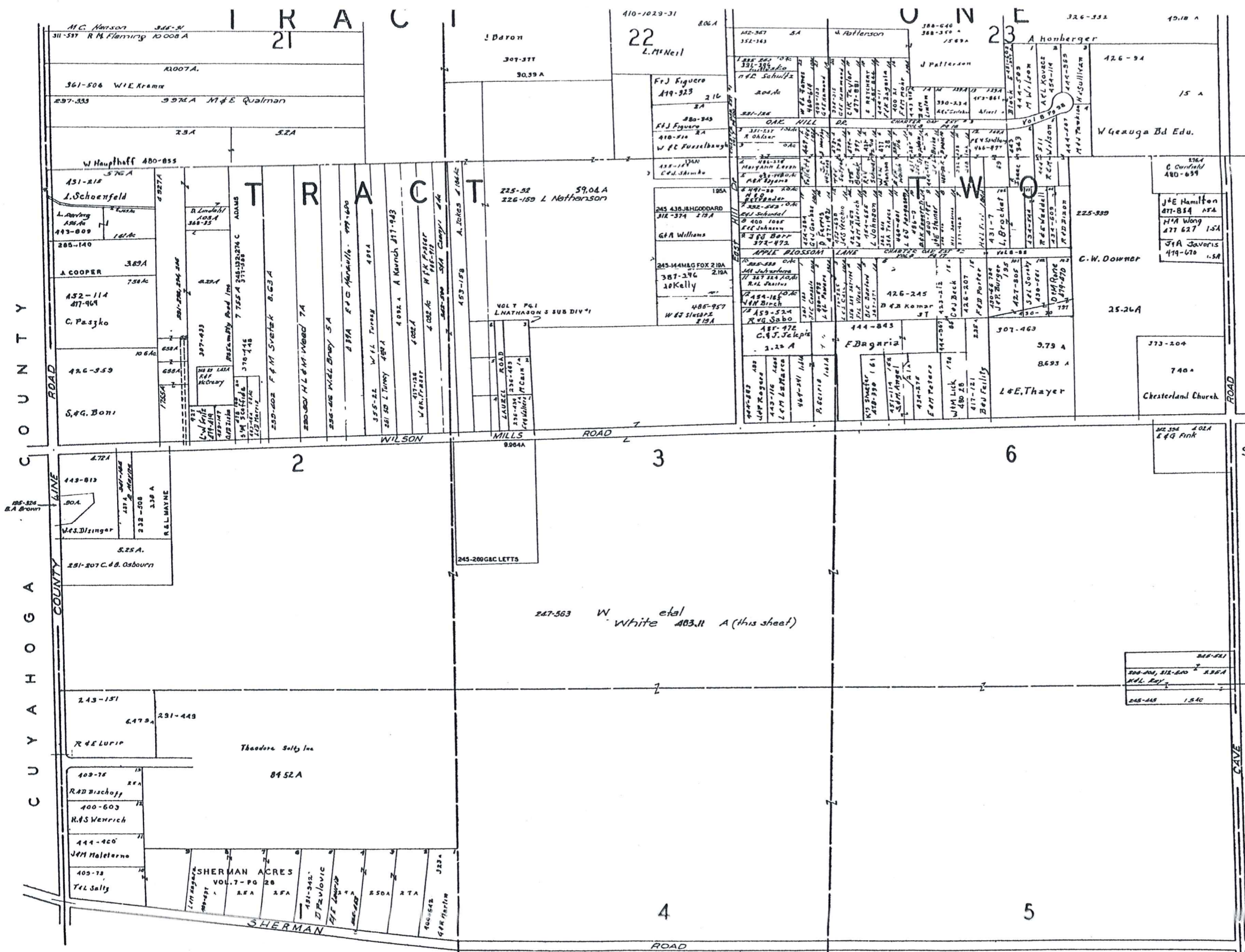


SCALE 1"=300'  
JAN. 1, 1968

**CHESTER  
TWP - D  
NOT TO SCALE  
1968**

A	B	C	
E	F	G	H
I	J	K	L
M	N	O	P

CHESTER D

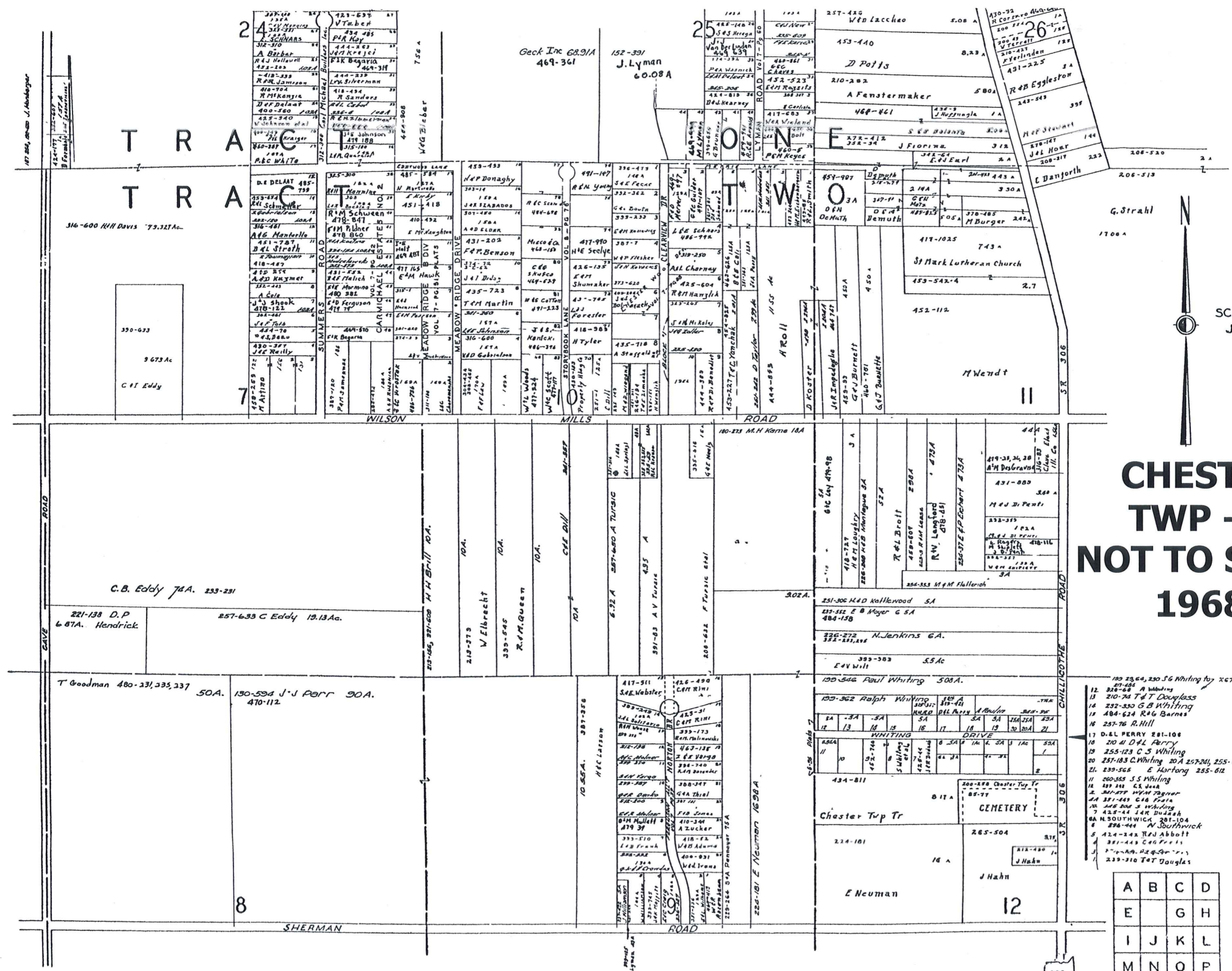


SCALE 1"=300'  
JAN. 15, 1968

# CHESTER TWP - E NOT TO SCALE 1968

A	B	C	D
E	F	G	H
I	J	K	L
M	N	O	P

CHESTER E



# CHESTER TWP - F NOT TO SCALE 1968



SCALE 1"=300'  
JAN. 15 1968

- 12 207-406 A Whiting
- 13 210-72 T & T Douglas
- 14 232-330 G B Whiting
- 15 404-624 R & G Barnes
- 16 257-76 R Hill
- 17 D.L. PERRY 201-108
- 18 210 W D L Perry
- 19 255-123 C S Whiting
- 20 257-183 C Whiting 20A 257-201, 255-612
- 21 230-565 E Hartong 255-612
- 22 200-565 S S Whiting
- 23 101-101 G S Jura
- 24 201-277 W H T Wagner
- 25 251-283 C H Fraiz
- 26 208-208 S Whiting
- 27 428-244 J & R Dugan
- 28 N. SOUTHWICK 201-104
- 29 298-444 N Southwick
- 30 424-244 H J Abbott
- 31 201-443 C H Fraiz
- 32 201-443 H J Abbott
- 33 239-310 T & T Douglas

A	B	C	D
E		G	H
I	J	K	L
M	N	O	P

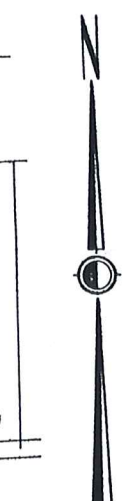
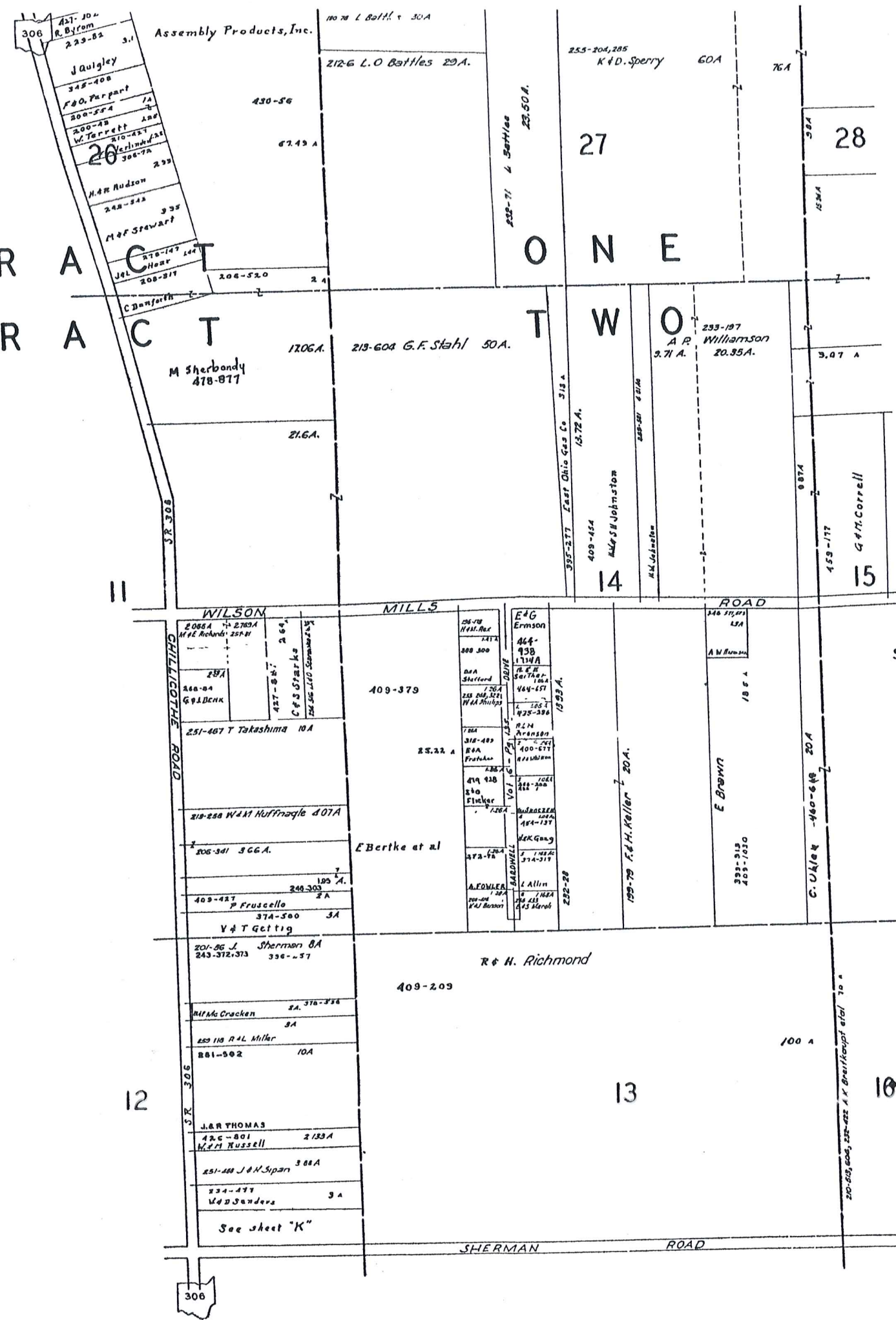
CHESTER

306

T R A C T  
T R A C T

O N E

T W O



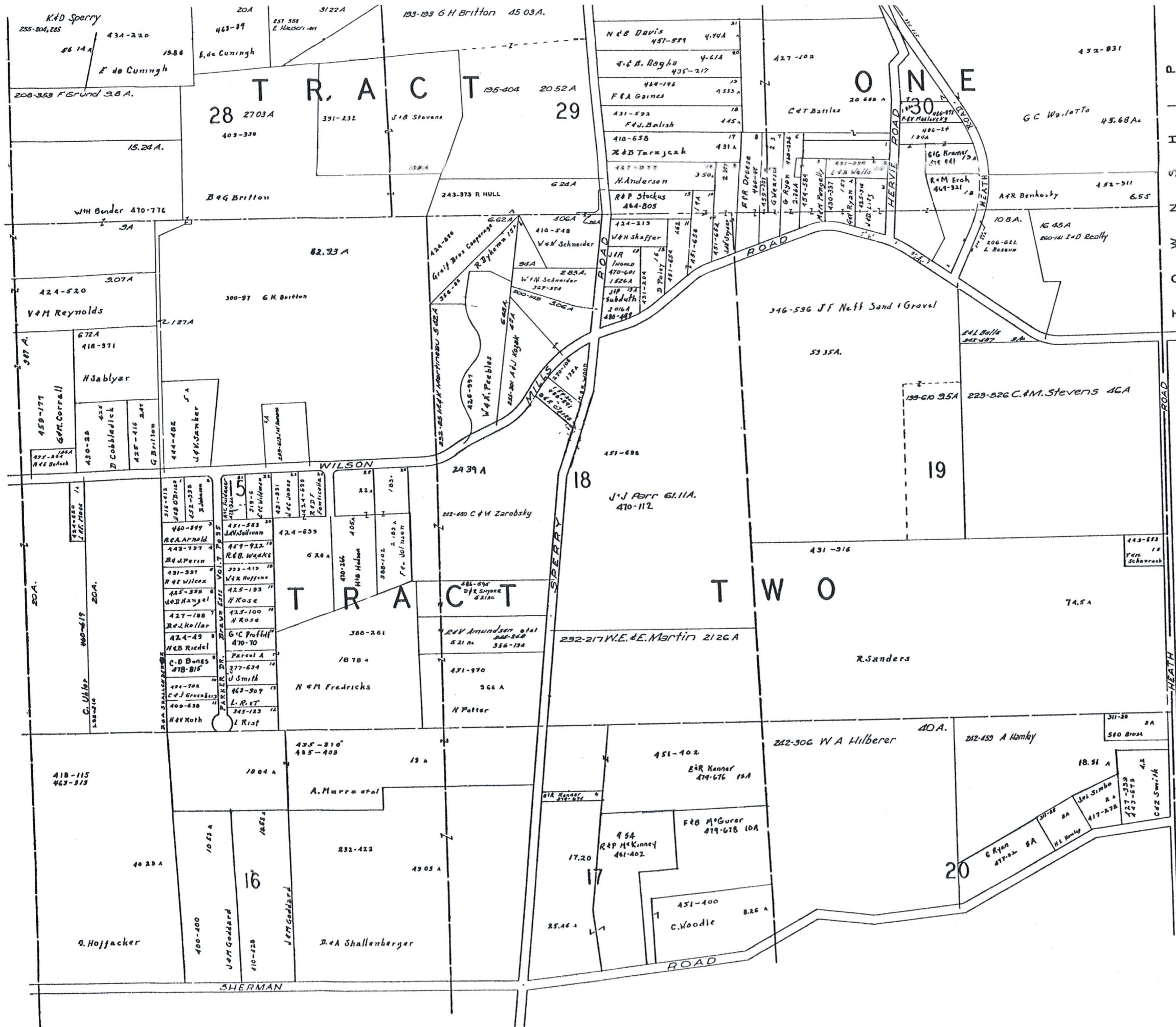
SCALE 1"=300'  
JAN. 1, 1968

**CHESTER  
TWP - G  
NOT TO SCALE  
1968**

A	B	C	D
E	F	G	H
I	J	K	L
M	N	O	P

CHESTER G

306



SCALE 1"=300'  
 JAN. 1, 1968

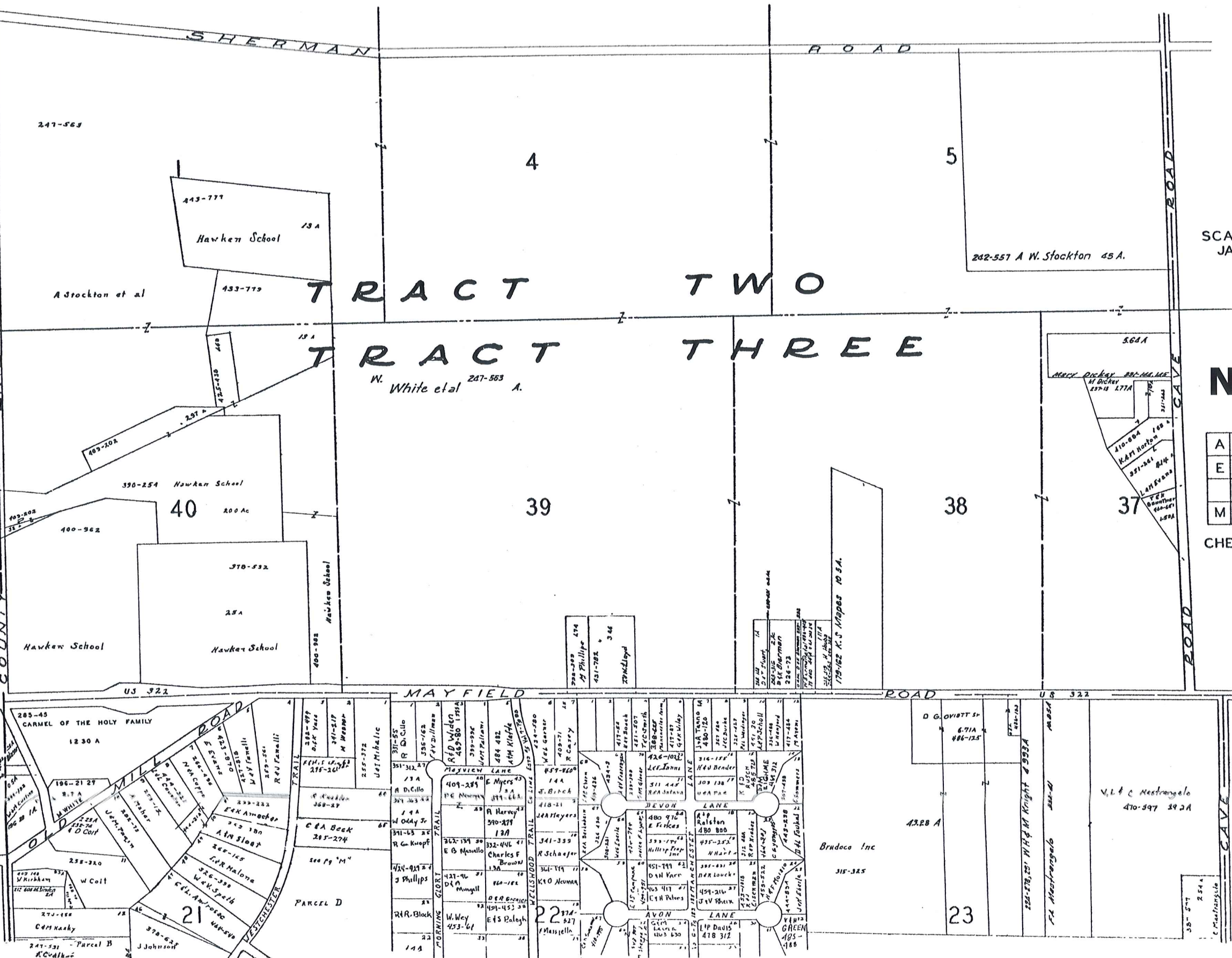
# CHESTER TWP - H NOT TO SCALE 1968

A	B	C	D
E	F	G	
I	J	K	L
M	N	O	P

COUNTY AHOOGA COUNTY

US 322

US 322



SCALE 1"=300'  
JAN. 1, 1968

# CHESTER TWP - I NOT TO SCALE 1968

A	B	C	D
E	F	G	H
	J	K	L
M	N	O	P

CHESTER I

US 322

CHESTER I





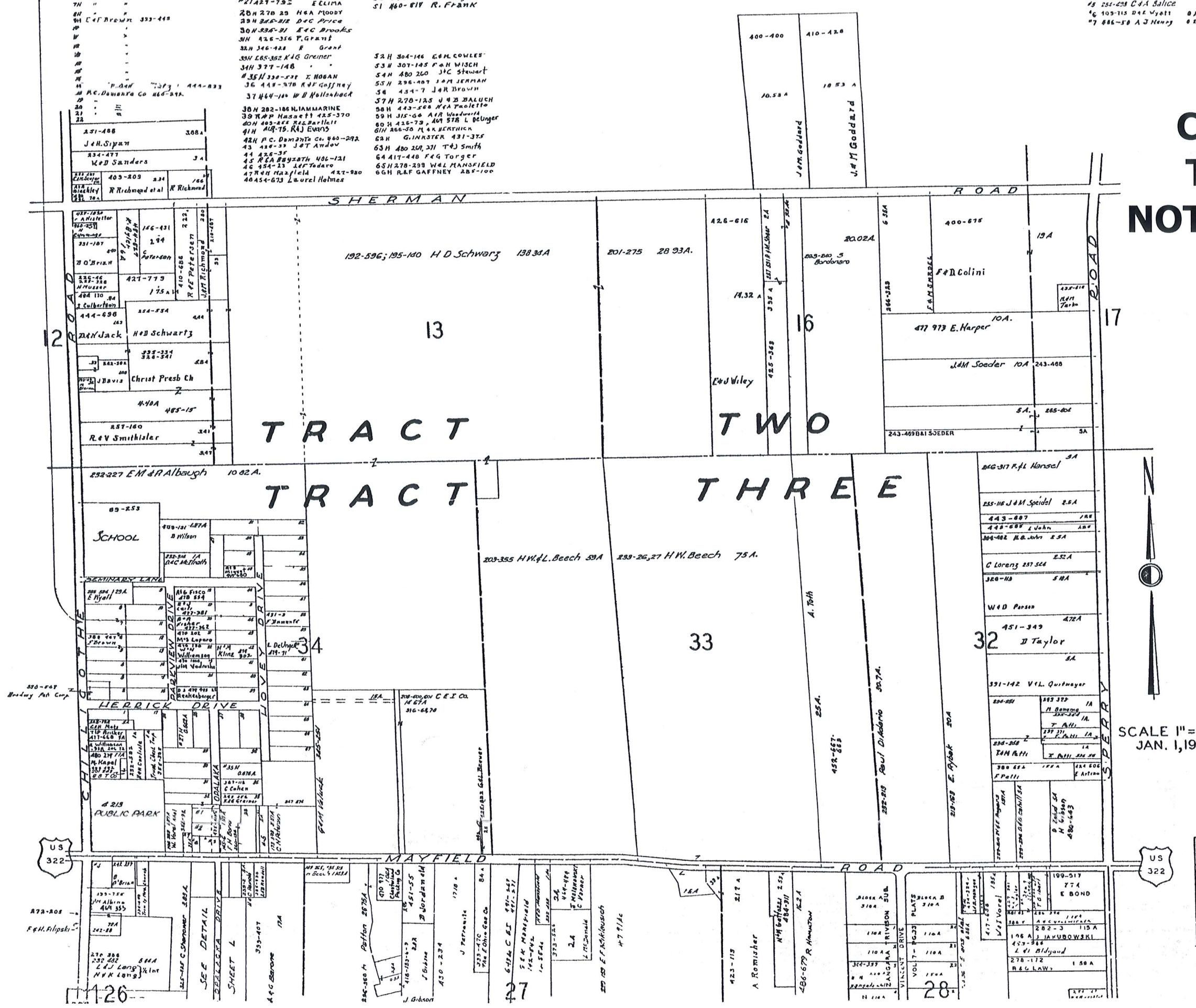
412-833  
 385-467  
 418-555  
 333-448  
 444-833  
 465-548

23H 614-35 T EA W8190  
 24H 307-758 CED Fox  
 25H 414-495 D J Renkenberger  
 26H 491-788 C & H Metz  
 27A 27-755 EELIMA  
 28H 270-20 HRA MOODY  
 29H 386-212 D+C Price  
 30H 386-21 E+C Brooks  
 31H 426-356 P.G.P.M.S.  
 32H 346-488 R Grant  
 33H 685-382 KAG Greiner  
 34H 377-148  
 35H 328-522 E. HOGAN  
 36 448-370 R.F. Gaffney  
 37 464-100 W B Hollenback  
 38H 202-106 LIAMMARINE  
 39 H & P Hassett 425-370  
 40H 483-228 R.L. Parlic  
 41H 408-75 R.J. Evans  
 42H P.C. Damant Co. 460-292  
 43 426-35 JET Andov  
 44 426-35  
 45 R & A Byggestad 486-121  
 46 454-13 LEF Tadaro  
 47 R & H Hazelfield 427-980  
 48 454-673 Laurel Holmes

32H 304-146 E.M. Cowles  
 33H 307-145 P.A.H. Wisch  
 34H 480-260 J.C. Stewart  
 35H 296-407 J.M. Sherman  
 36 454-7 J.R. Brown  
 37H 270-125 V.B. Baluch  
 38H 443-588 M.A. Trollett  
 39H 315-68 A.V. Wankowitz  
 40H 428-73 A.M. 578 L. DeLinger  
 41H 486-50 M.A. Benthick  
 42H G. MASTERS 431-375  
 43H 480-200 J.T. Smith  
 44 417-440 F.G. Torger  
 45H 278-209 W.A.L. Mansfield  
 46H R.F. GAFFNEY 285-100

1 267-618 M.C. Aank 0415A 201 50 24  
 2 254-21 J. Hayashi 0415A " 34  
 3 226-41 F.E. Evans 061A " 31  
 4 257-60 F. Hoffman aka 0.78A " 26  
 5 254-258 C.A. Salice " 34  
 6 103-715 D.L. Vye 017A " 34  
 7 886-50 A.J. Henry 011A " 34

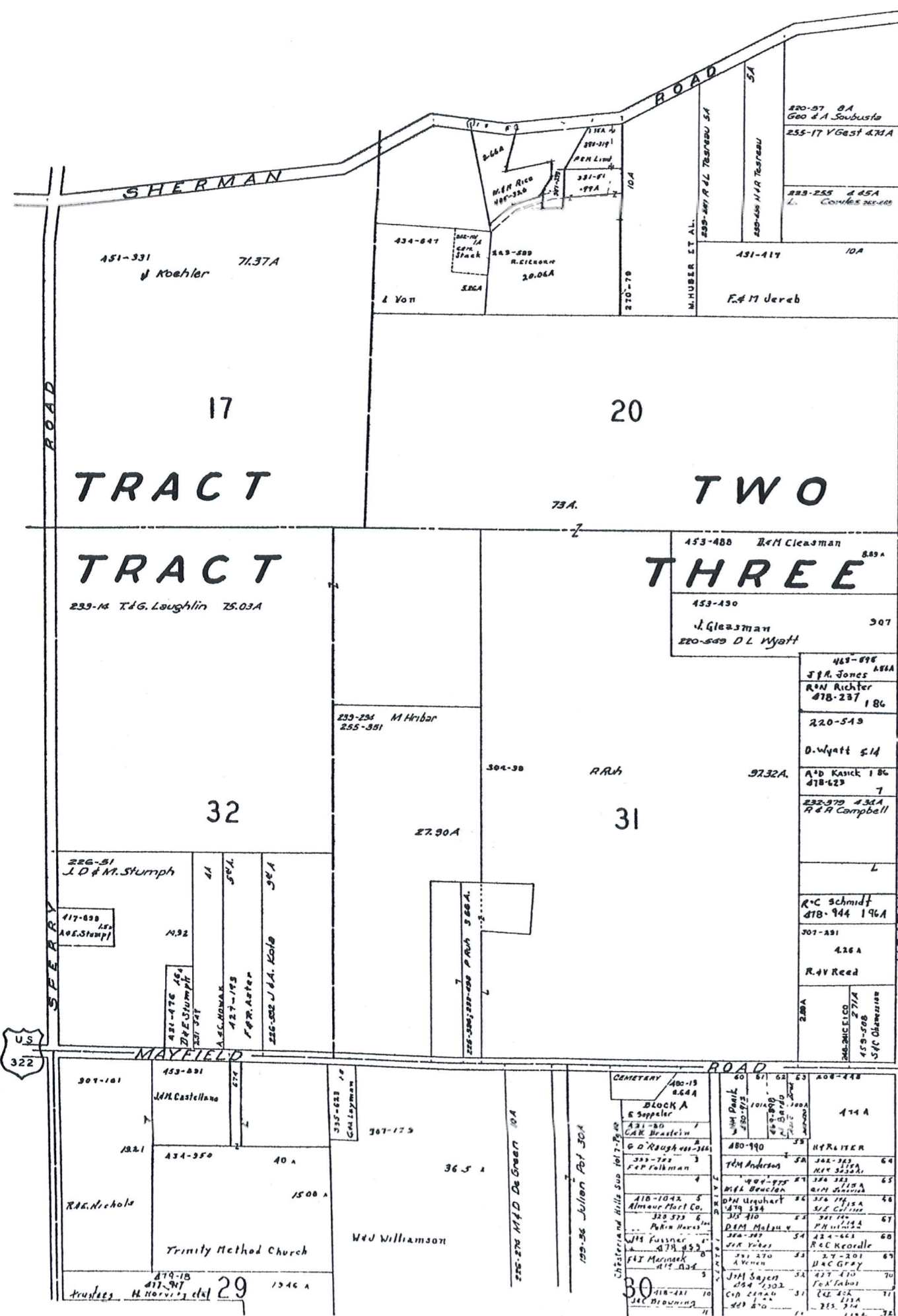
# CHESTER TWP - K NOT TO SCALE 1968



SCALE 1" = 300'  
 JAN. 1, 1968

A	B	C	D
E	F	G	H
I	J	K	L
M	N	O	P

CHESTER K



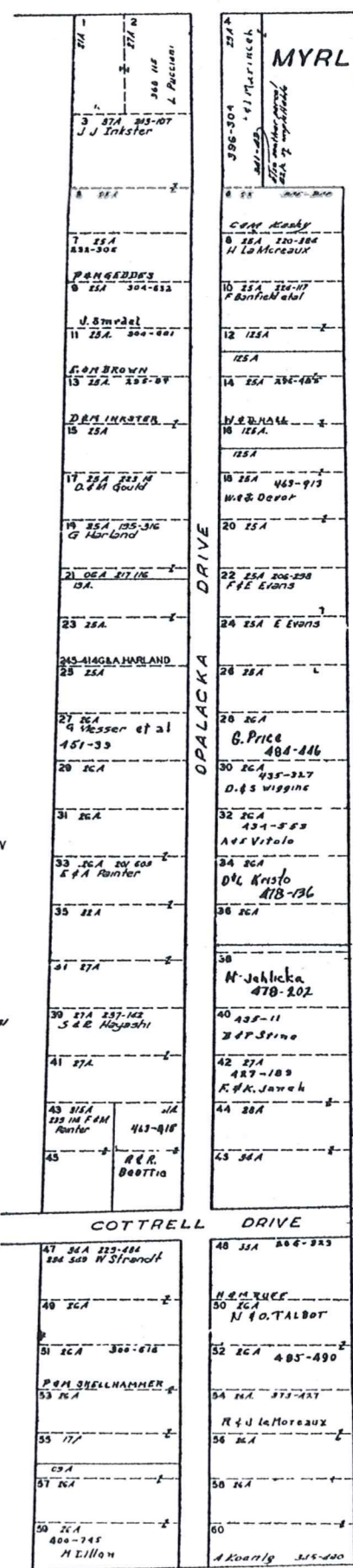
MUNSON TOWNSHIP



SCALE 1"=300'  
JAN. 1, 1968

- CHESTERLAND HILLS SUB DIV
- 1 J. J. Miller 215-174
  - 2 D. J. Brundish 220-229
  - 3 R. E. G. G. G. 463-589
  - 4 R. E. C. W. 325-485
  - 5
  - 6
  - 7
  - 8
  - 9
  - 10
  - 11
  - 12
  - 13
  - 14
  - 15
  - 16
  - 17
  - 18
  - 19
  - 20
  - 21
  - 22
  - 23
  - 24
  - 25
  - 26
  - 27
  - 28
  - 29
  - 30
  - 31
  - 32
  - 33
  - 34
  - 35
  - 36
  - 37
  - 38
  - 39
  - 40
  - 41
  - 42
  - 43
  - 44
  - 45
  - 46
  - 47
  - 48
  - 49
  - 50
  - 51
  - 52
  - 53
  - 54
  - 55
  - 56
  - 57
  - 58
  - 59
  - 60
  - 61
  - 62
  - 63
  - 64
  - 65
  - 66
  - 67
  - 68
  - 69
  - 70
  - 71
  - 72

MAYFIELD ROAD U.S. 322



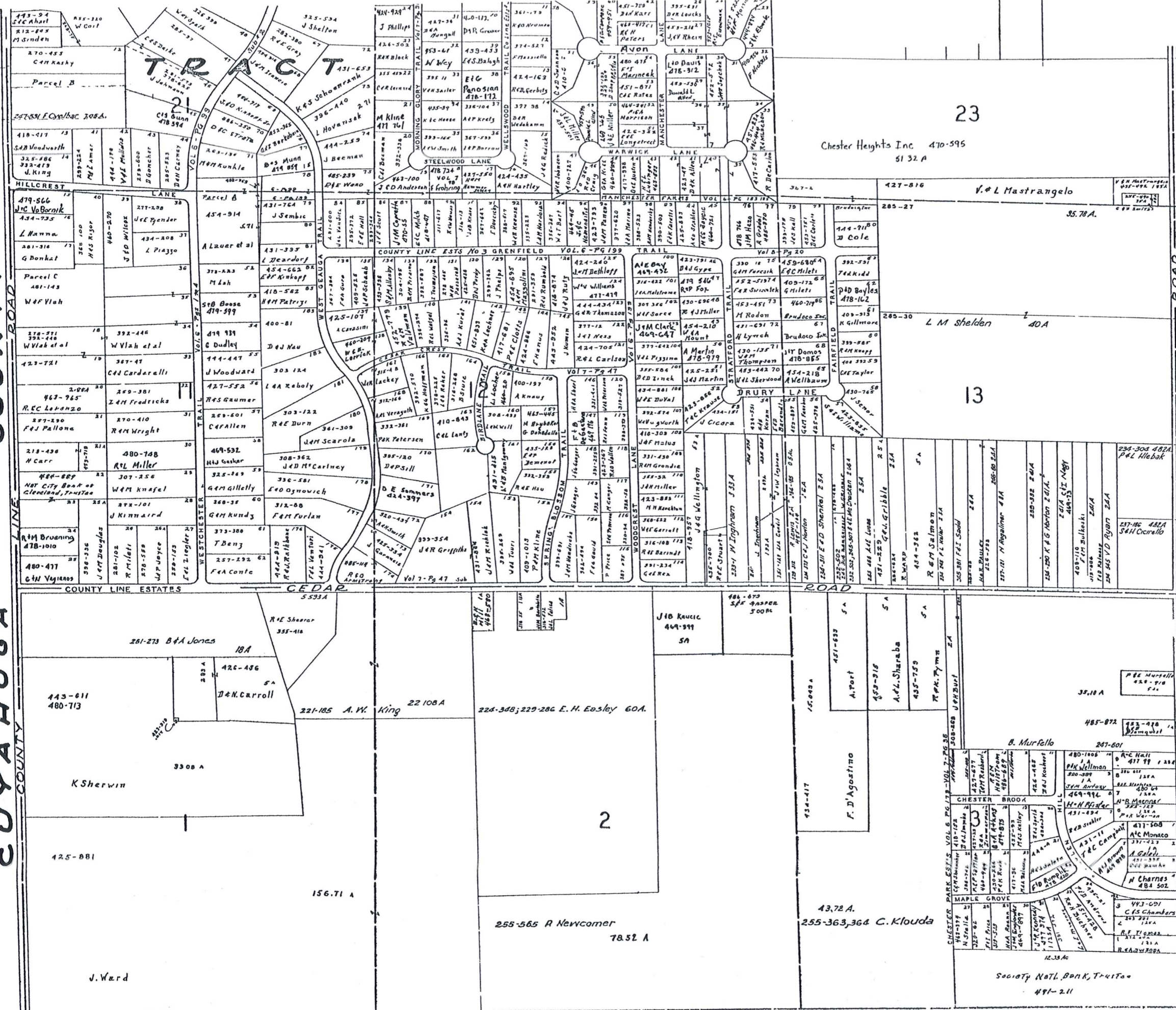
MYRLIN HEIGHTS SUB.  
VOL. 3 PG 6 PLATS  
SCALE 1"=100'

**CHESTER  
TWP - L  
NOT TO SCALE  
1968**

A	B	C	D
E	F	G	H
I	J	K	
M	N	O	P

CHESTER L

COUNTY ROAD  
CUNYAHOGA COUNTY LINE



SCALE 1"=300  
JAN. 1, 1968

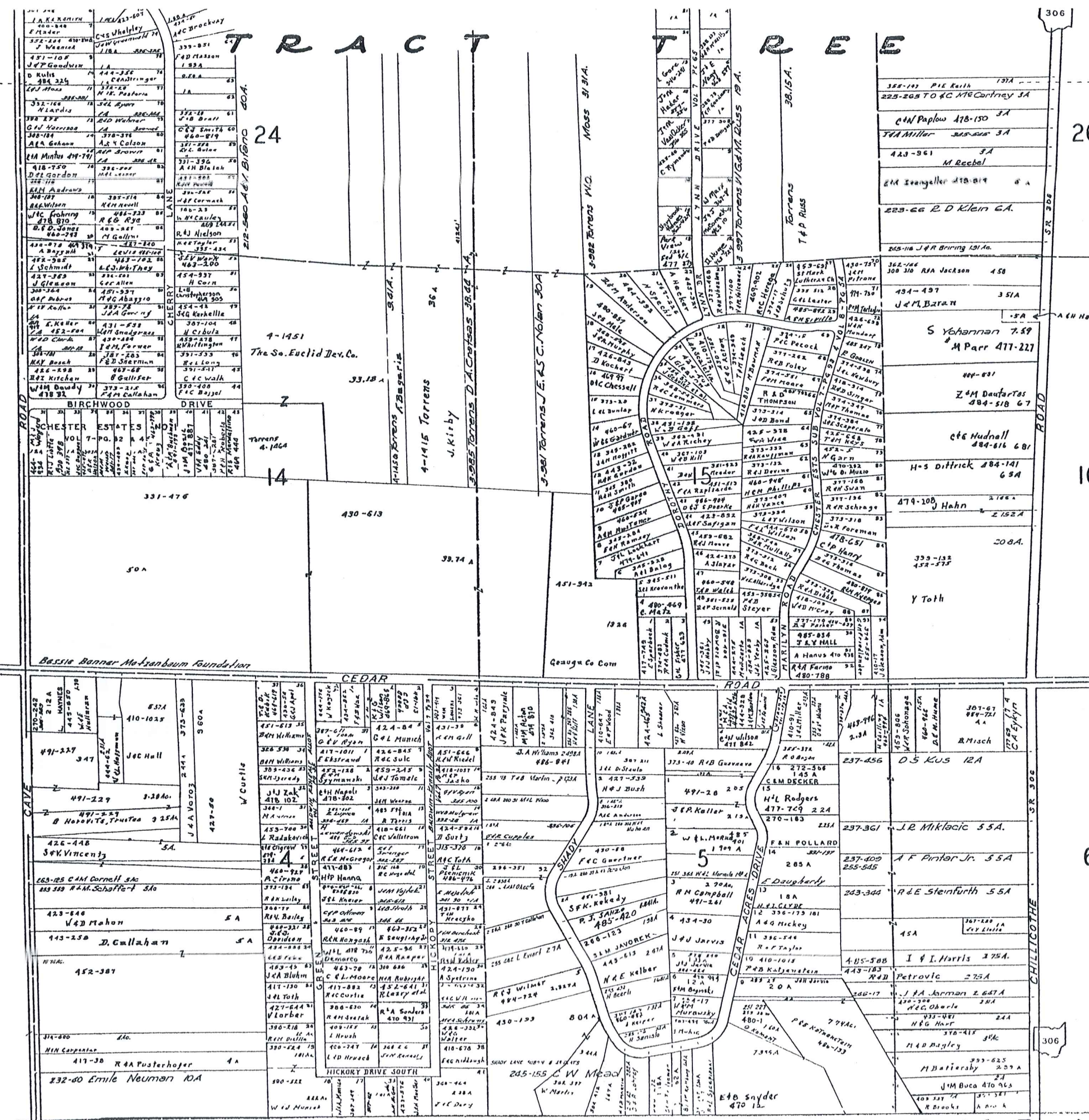
# CHESTER TWP - M

## NOT TO SCALE

### 1968

A	B	C	D
E	F	G	H
I	J	K	L
N	O	P	

CHESTER M



LYNN SUBDIVISION Vol. 7 P. 65

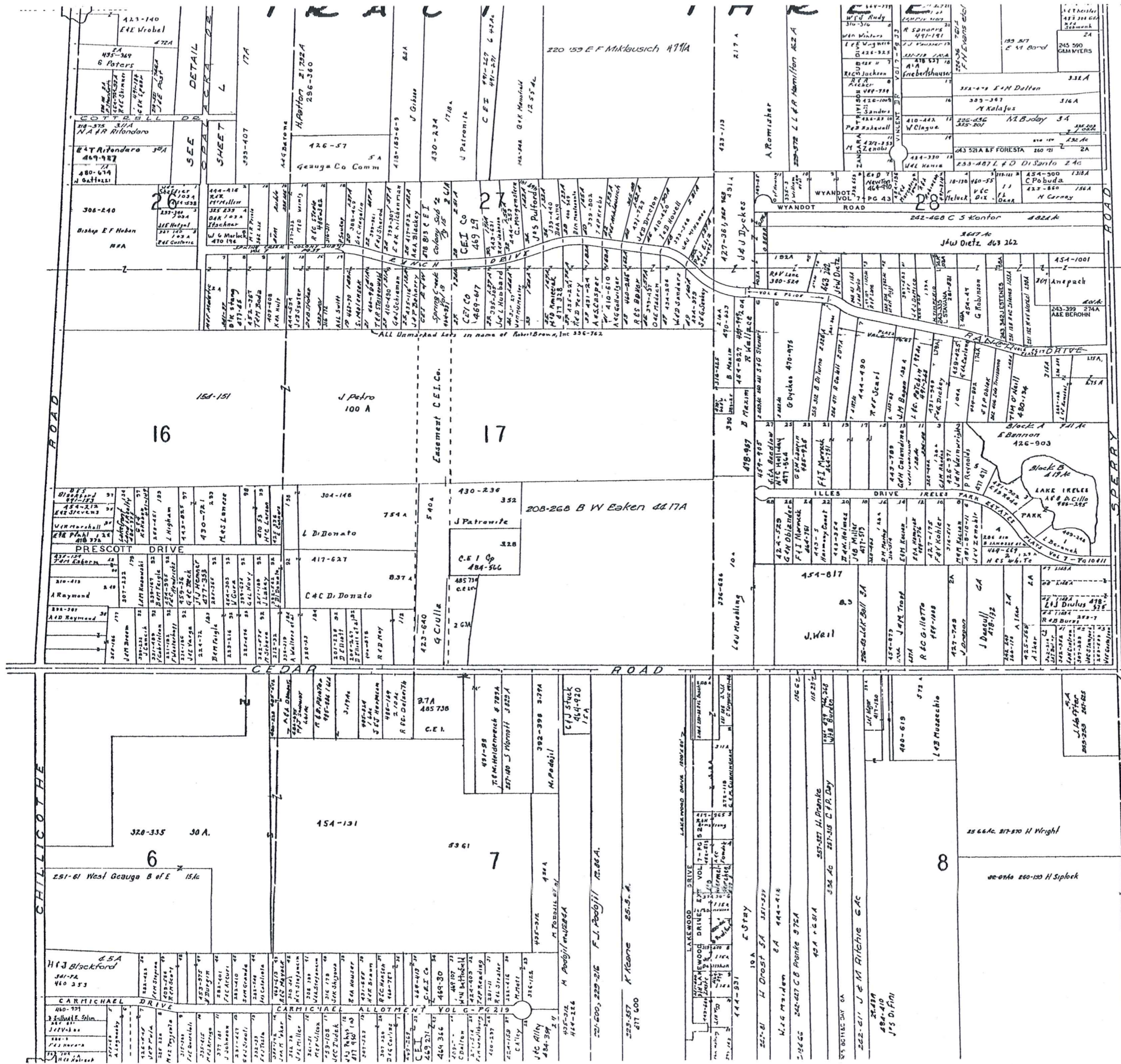
1	D. Geraci	318-257
2	McNeilly, W.A.N.	382-133
3	Nagy, J.H.E.	367-577
4	T. Goodman	388-77
5	P. Delligatta	371-90
6	W. Mary	367-8
7	E.G. McCormick	468-10
8	D. Rugg	468-784
9	Park View Federal	471-375
10	Shelby Park Homes Inc.	382-688
11	C. Raymond	425-46
12	J.H. Van Arker	316-355
13	J.H. Madar	389-486
14	L. Gore	346-241

SCALE 1"=300'  
JAN. 1, 1968

# CHESTER TWP - N NOT TO SCALE 1968

A	B	C	D
E	F	G	H
I	J	K	L
M	O	P	

CHESTER N



SCALE 1" = 300'  
JAN. 1, 1968

- SHOGBER SURVEY Vol 6 Pg 49 Plats
- 1 L. E. M. Conroy 242-354
  - 2 W. C. Blanton 247-209
  - 3 W. E. Gustafson 250-520
  - 4 R. B. Burris 250-7
  - 5 J. M. Nathan 255-377
  - 6 " " " " " "
  - 7 " " " " " "

# CHESTER TWP - 0 NOT TO SCALE 1968

A	B	C	D
E	F	G	H
I	J	K	L
M	N		P

CHESTER O

